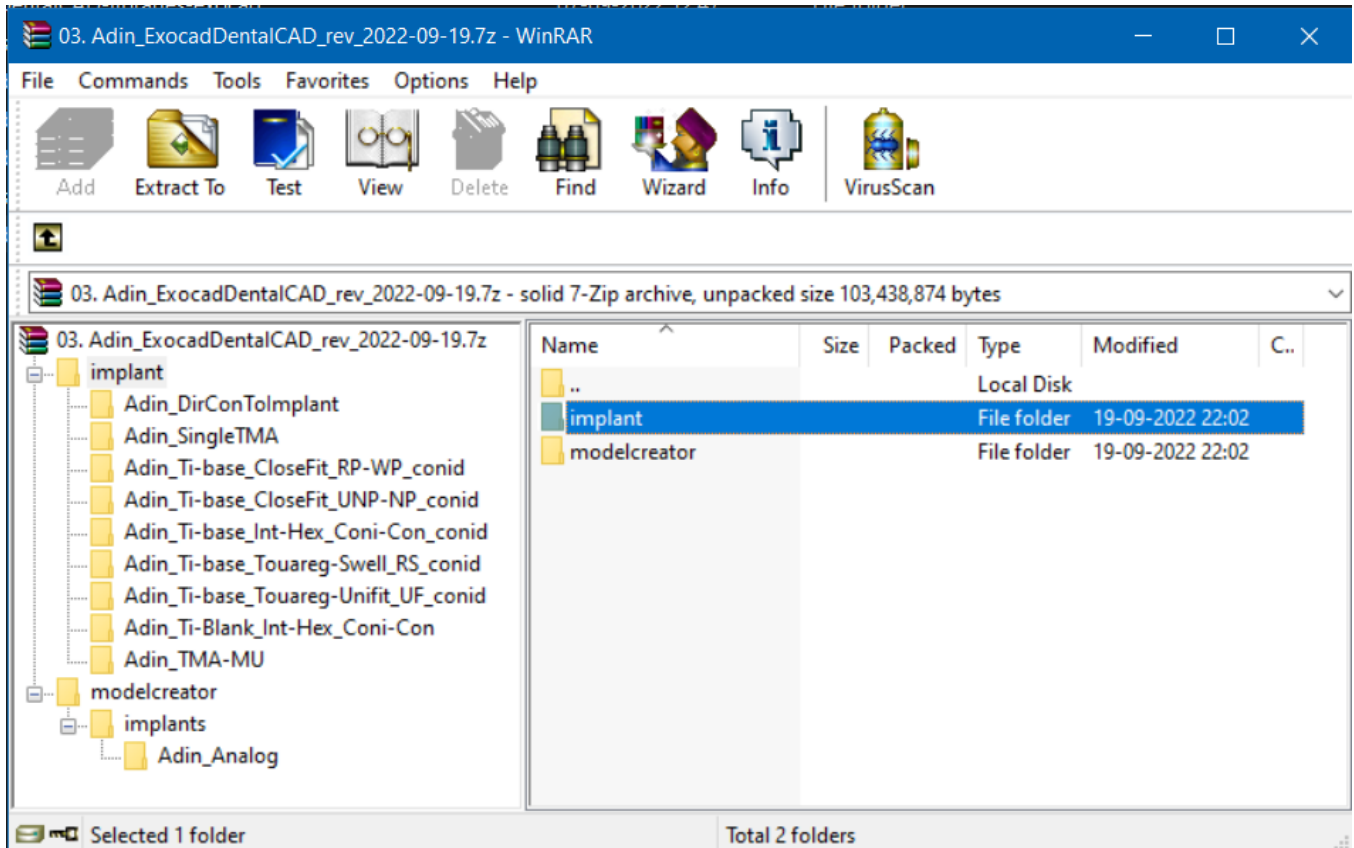


Importing CAD libraries to Exocad DentalCAD

1. Download the latest Adin Implants CAD library for Exocad-DentalCAD from www.adin-implants.com > Digital Solutions > CAD-CAM



2. Extract the zip file and save the library folders "implant" & "modelcreator" to a local drive.

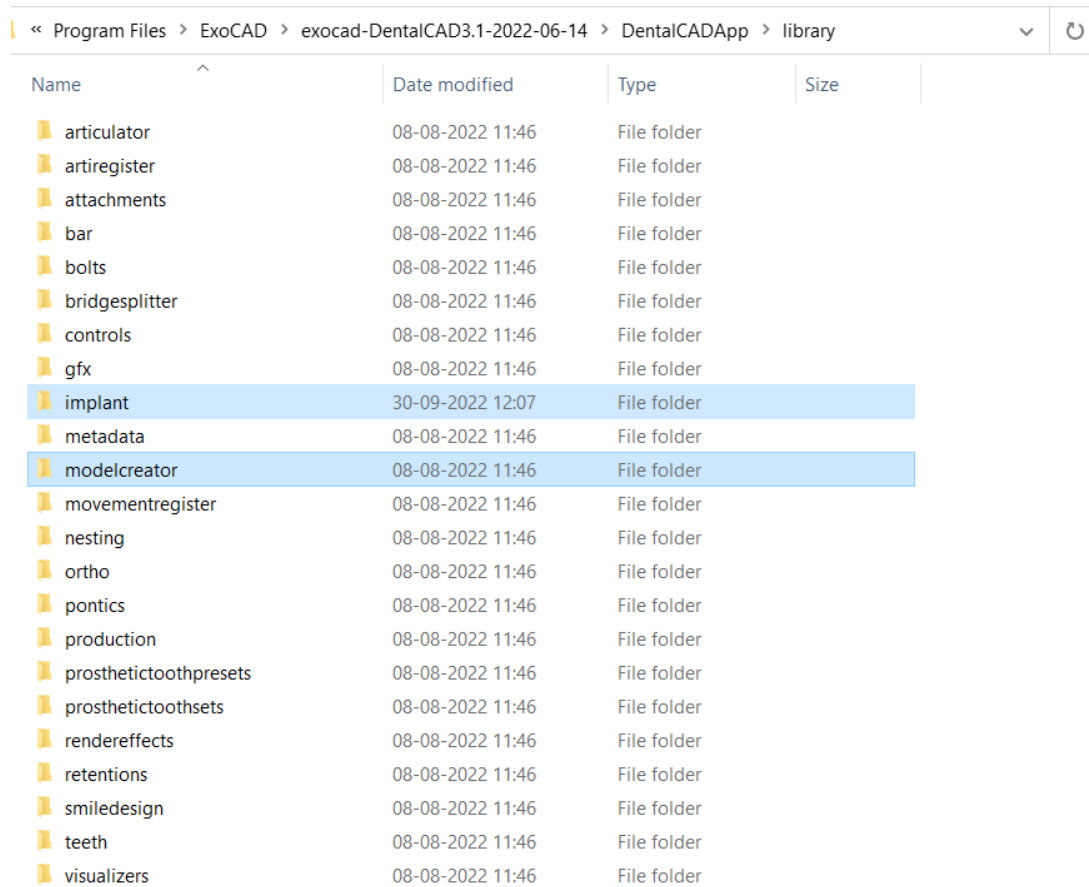
3. Navigate to the directory where Exocad library is installed on your computer.

(example: C:\Program Files\ExoCAD\exocad-DentalCAD3.1-2022-06-14\DentalCADApp\library)

NOTE: Before installing the latest libraries, it is always recommended to remove the previously version of Adin CAD libraries to avoid compatibility conflicts or overlapping of old and new libraries.

Importing CAD libraries to Exocad DentalCAD

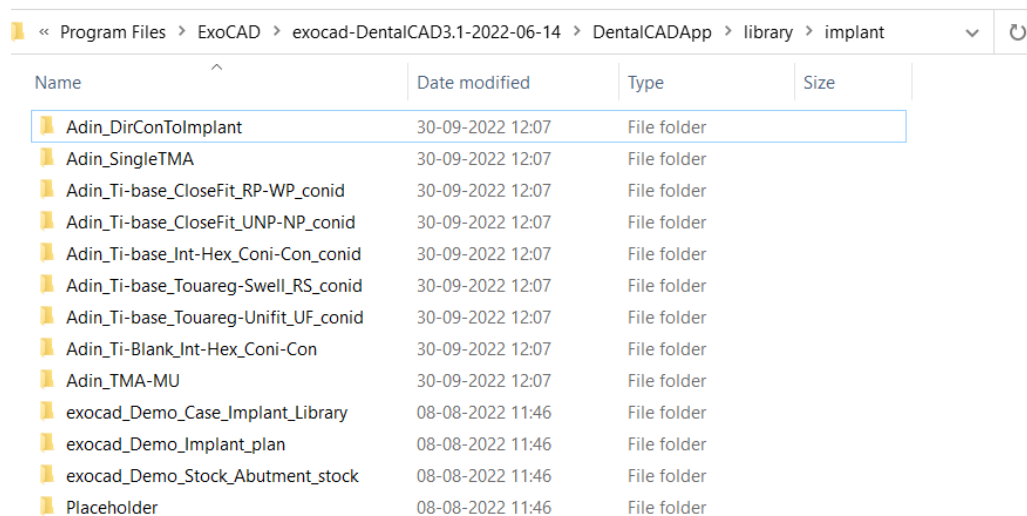
4. Copy and paste the unzipped folders "implant" & "modelcreator" to the Exocad directory on your computer (refer to the image below).



« Program Files > ExoCAD > exocad-DentalCAD3.1-2022-06-14 > DentalCADApp > library

Name	Date modified	Type	Size
articulator	08-08-2022 11:46	File folder	
artiregister	08-08-2022 11:46	File folder	
attachments	08-08-2022 11:46	File folder	
bar	08-08-2022 11:46	File folder	
bolts	08-08-2022 11:46	File folder	
bridgesplitter	08-08-2022 11:46	File folder	
controls	08-08-2022 11:46	File folder	
gfx	08-08-2022 11:46	File folder	
implant	30-09-2022 12:07	File folder	
metadata	08-08-2022 11:46	File folder	
modelcreator	08-08-2022 11:46	File folder	
movementregister	08-08-2022 11:46	File folder	
nesting	08-08-2022 11:46	File folder	
ortho	08-08-2022 11:46	File folder	
pontics	08-08-2022 11:46	File folder	
production	08-08-2022 11:46	File folder	
prostheticoothpresets	08-08-2022 11:46	File folder	
prostheticoothsets	08-08-2022 11:46	File folder	
rendereffects	08-08-2022 11:46	File folder	
retentions	08-08-2022 11:46	File folder	
smiledesign	08-08-2022 11:46	File folder	
teeth	08-08-2022 11:46	File folder	
visualizers	08-08-2022 11:46	File folder	

5. The installed Adin CAD library should look as shown in the image below.

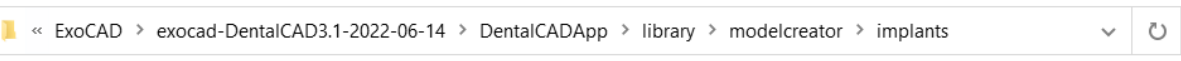


« Program Files > ExoCAD > exocad-DentalCAD3.1-2022-06-14 > DentalCADApp > library > implant

Name	Date modified	Type	Size
Adin_DirConToImplant	30-09-2022 12:07	File folder	
Adin_SingleTMA	30-09-2022 12:07	File folder	
Adin_Ti-base_CloseFit_RP-WP_conid	30-09-2022 12:07	File folder	
Adin_Ti-base_CloseFit_UNP-NP_conid	30-09-2022 12:07	File folder	
Adin_Ti-base_Int-Hex_Coni-Con_conid	30-09-2022 12:07	File folder	
Adin_Ti-base_Touareg-Swell_RS_conid	30-09-2022 12:07	File folder	
Adin_Ti-base_Touareg-Unifit_UF_conid	30-09-2022 12:07	File folder	
Adin_Ti-Blank_Int-Hex_Coni-Con	30-09-2022 12:07	File folder	
Adin_TMA-MU	30-09-2022 12:07	File folder	
exocad_Demo_Case_Implant_Library	08-08-2022 11:46	File folder	
exocad_Demo_Implant_plan	08-08-2022 11:46	File folder	
exocad_Demo_Stock_Abutment_stock	08-08-2022 11:46	File folder	
Placeholder	08-08-2022 11:46	File folder	

Importing CAD libraries to Exocad DentalCAD

6. The installed model creator library should look as shown in the image below.



Name	Date modified	Type	Size
Adin_Analog	30-09-2022 12:35	File folder	
exocad_Demo_Case_ModelCreator_Library	08-08-2022 11:46	File folder	
exocad_Demo_ModelCreator_Library	08-08-2022 11:46	File folder	

7. Restart the Exocad software for the libraries to take effect.