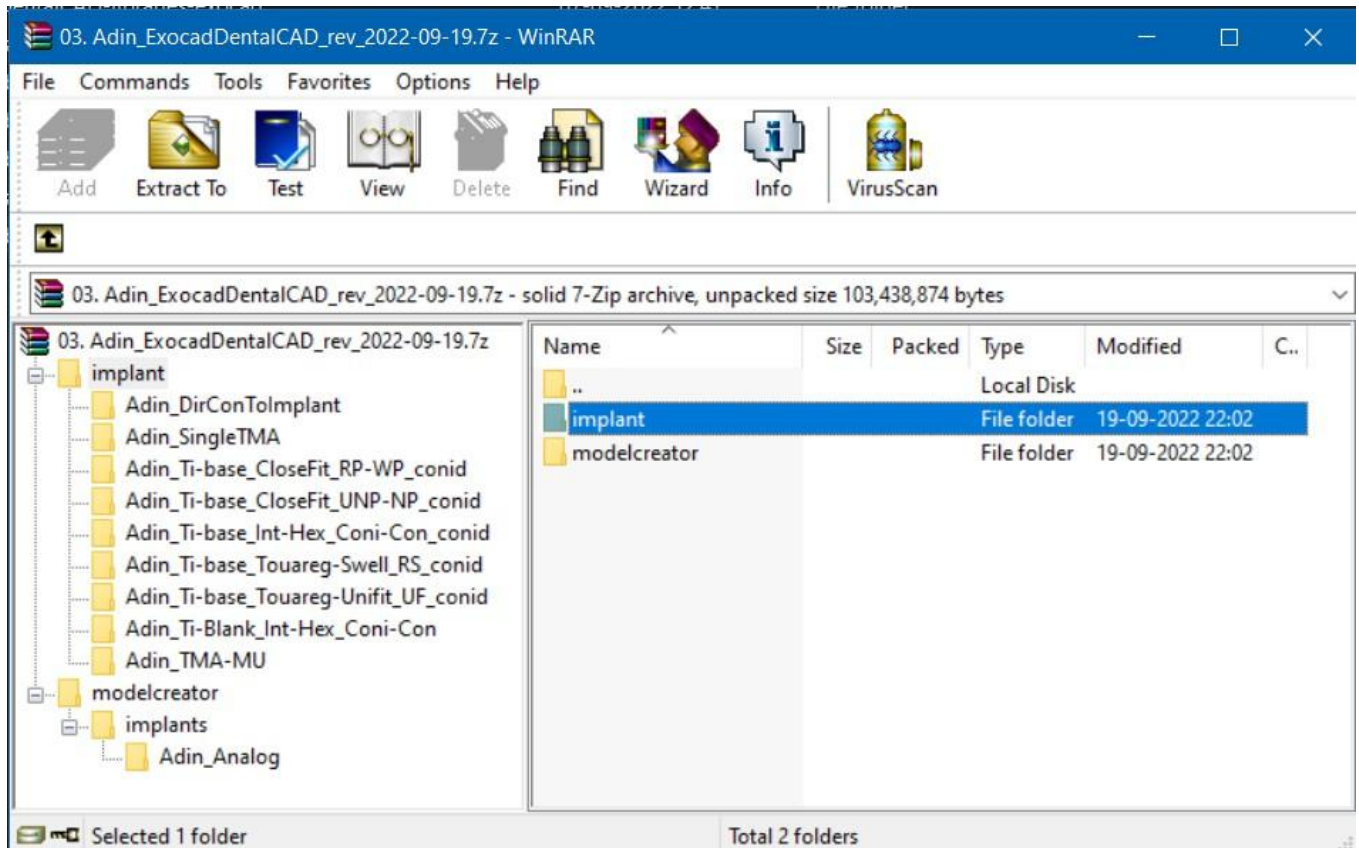


# Importing CAD libraries to Exocad DentalCAD

1. Download the latest Adin Implants CAD library for Exocad-DentalCAD from [www.adin-implants.com](http://www.adin-implants.com) > *Digital Solutions* > *CAD-CAM*



2. Extract the zip file and save the library folders to a local drive.
3. Navigate to the directory where Exocad library is installed on your computer.

(example: C:\Program Files\ExoCAD\exocad-DentalCAD3.1-2022-06-14\DentalCADApp\library)

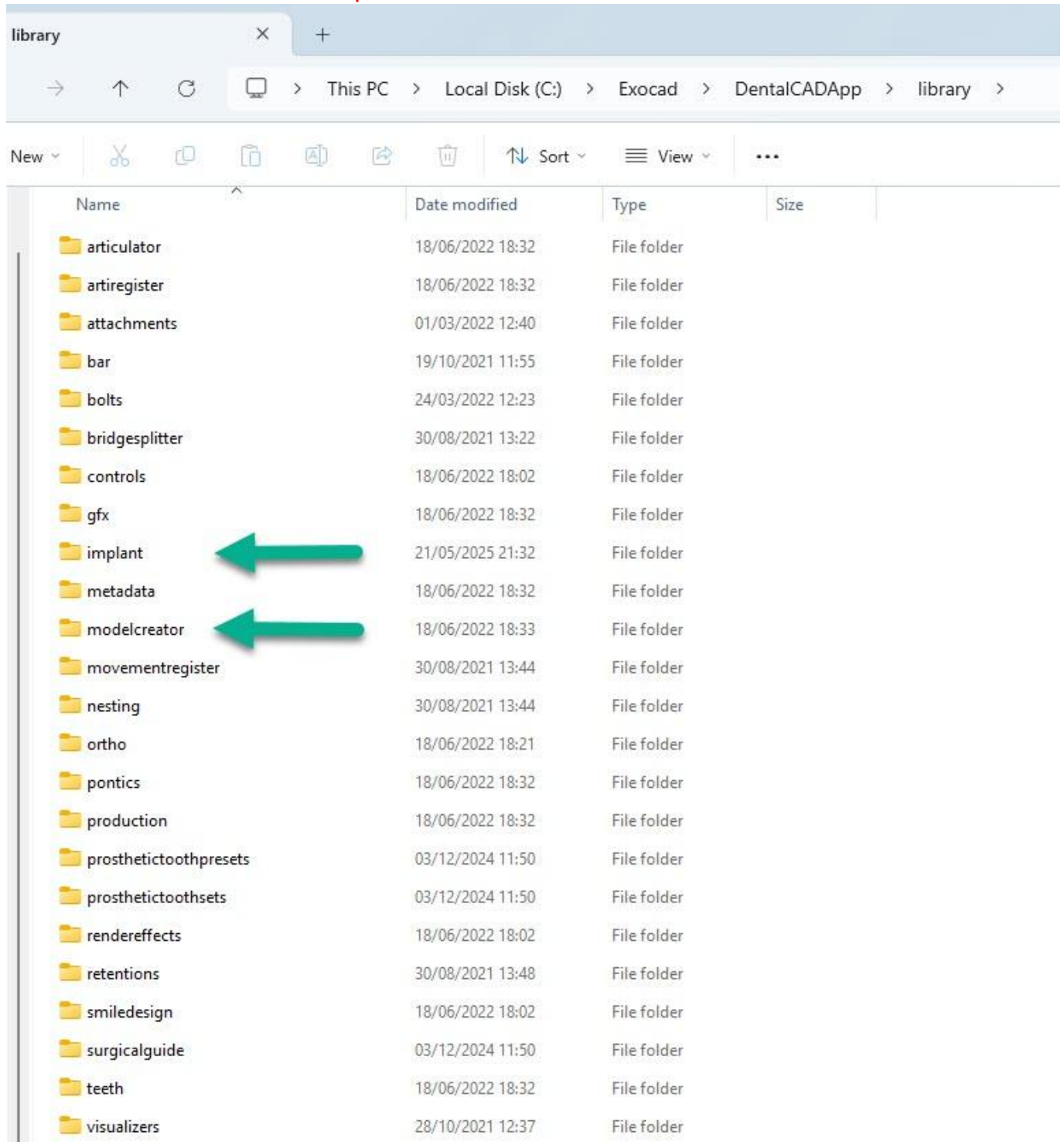
**NOTE:** Before installing the latest libraries, it is always recommended to remove the previously version of Adin CAD libraries to avoid compatibility conflicts or overlapping of old and new libraries.

# Importing CAD libraries to Exocad DentalCAD

4. Copy and paste the unzipped folders to the Exocad directory on your computer (refer to the image below).

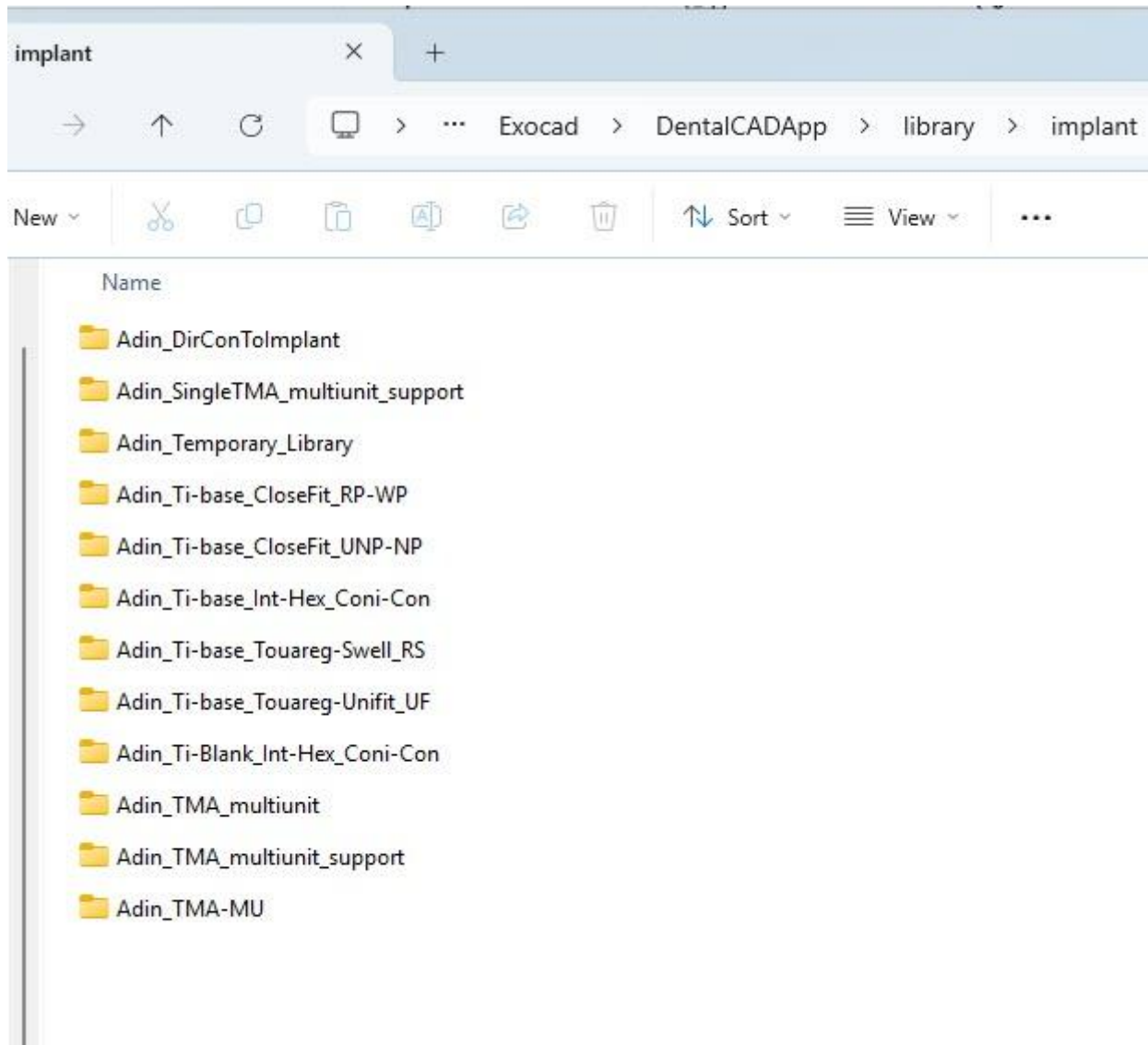
\*..> **implant** > folder – all Dental-Cad -libraries

\* ..>**modelcreator** > **implants** > folder – all Model-creator libraries



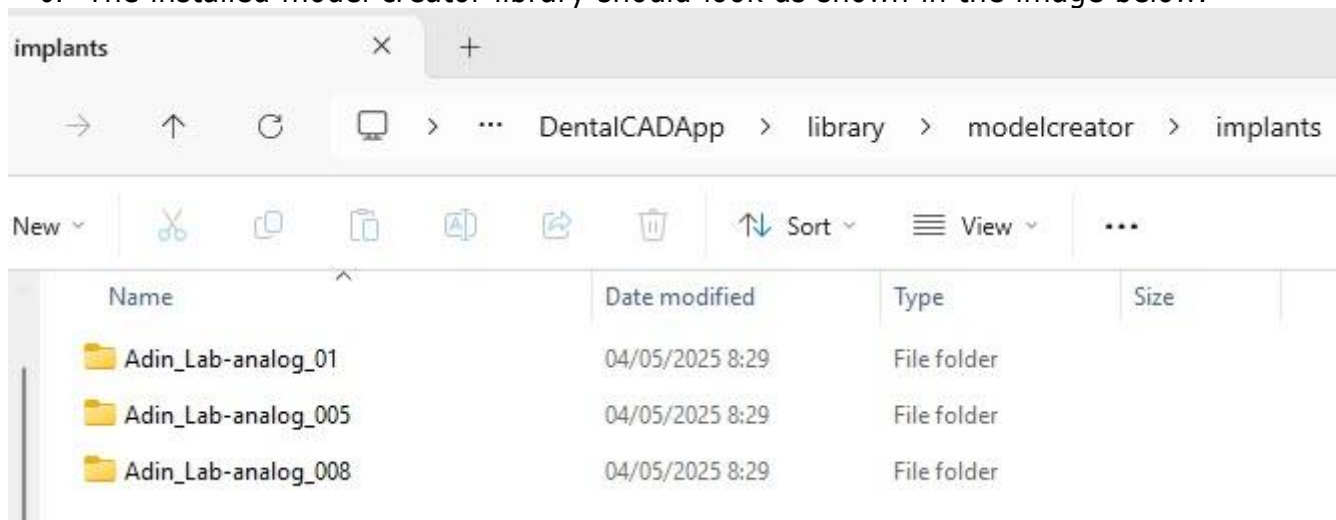
# Importing CAD libraries to Exocad DentalCAD

5. The installed Adin CAD library should look as shown in the image below.



# Importing CAD libraries to Exocad DentalCAD

6. The installed model creator library should look as shown in the image below.



7. Restart the Exocad software for the libraries to take effect.